

**PEMBROKESHIRE COUNTY COUNCIL**

**INTRODUCTION OF A TOUCAN CROSSING AND REMOVAL OF EXISTING ZEBRA  
CROSSING – A4139, ORANGE WAY, PEMBROKE 2021**

---

**Statement of Reason**

The Council is proposing to introduce a new Toucan crossing on the A4139, Orange Way and remove the existing Zebra crossing at this location. The proposed crossing is located adjacent to Grove School and will provide a safe crossing for both pedestrians and cyclists; connecting between the shared use paths on either side of Orange way.

The work is being funded by Welsh Government as part of the Safe Routes in Communities and forms part of a package of measures being implemented in the vicinity of the School.

# PUBLIC NOTICE

## PEMBROKESHIRE COUNTY COUNCIL

### INTRODUCTION OF A TOUCAN CROSSING AND REMOVAL OF EXISTING ZEBRA CROSSING – A4139, ORANGE WAY, PEMBROKE 2021

**NOTICE** is hereby given that Pembrokeshire County Council in exercise of its powers under Section 23 of the Road Traffic Regulation Act 1984, intend to introduce a signal-controlled Toucan crossing, as detailed in schedule 1 and remove the existing Zebra crossing as detailed in schedule 2.

A Toucan Crossing is designed for both pedestrians and cyclists and are typically used adjacent to a cycle-path (Cyclists are not allowed to cross the road using Zebra, Pelican or Puffin crossings). They have the same signals as Pelicans, but include a green cycle symbol alongside the green man.

Zebra Crossings are marked by black and white broad painted strips across the road and flashing amber beacons. Motorists '**must** give way when someone has moved onto a crossing'. However, pedestrians should remain on the kerbside for safety's sake until approaching vehicles have stopped.

#### Schedule 1

A signalised toucan crossing would be introduced on Orange Way (A4139) Pembroke, with the centre located 65m North West of Grove Hill. The crossing would be supported with associated zig-zag markings, on which vehicles would be prohibited from stopping at all times, which would be placed on either side of the crossing.

#### Schedule 2

Removal of the existing Zebra crossing, with the centre located 65m North West of Grove Hill.

A plan showing the location of the crossing maybe inspected online at

[www.pembrokeshire.gov.uk/TRO-public-notice](http://www.pembrokeshire.gov.uk/TRO-public-notice)

If you wish to object to the proposal you should send the grounds for your objection by either completing the online feedback form, or, in writing to the undersigned by the 17<sup>th</sup> day of March 2021. Please Quote: ORANGE -P/C

Dated 24th February 2021

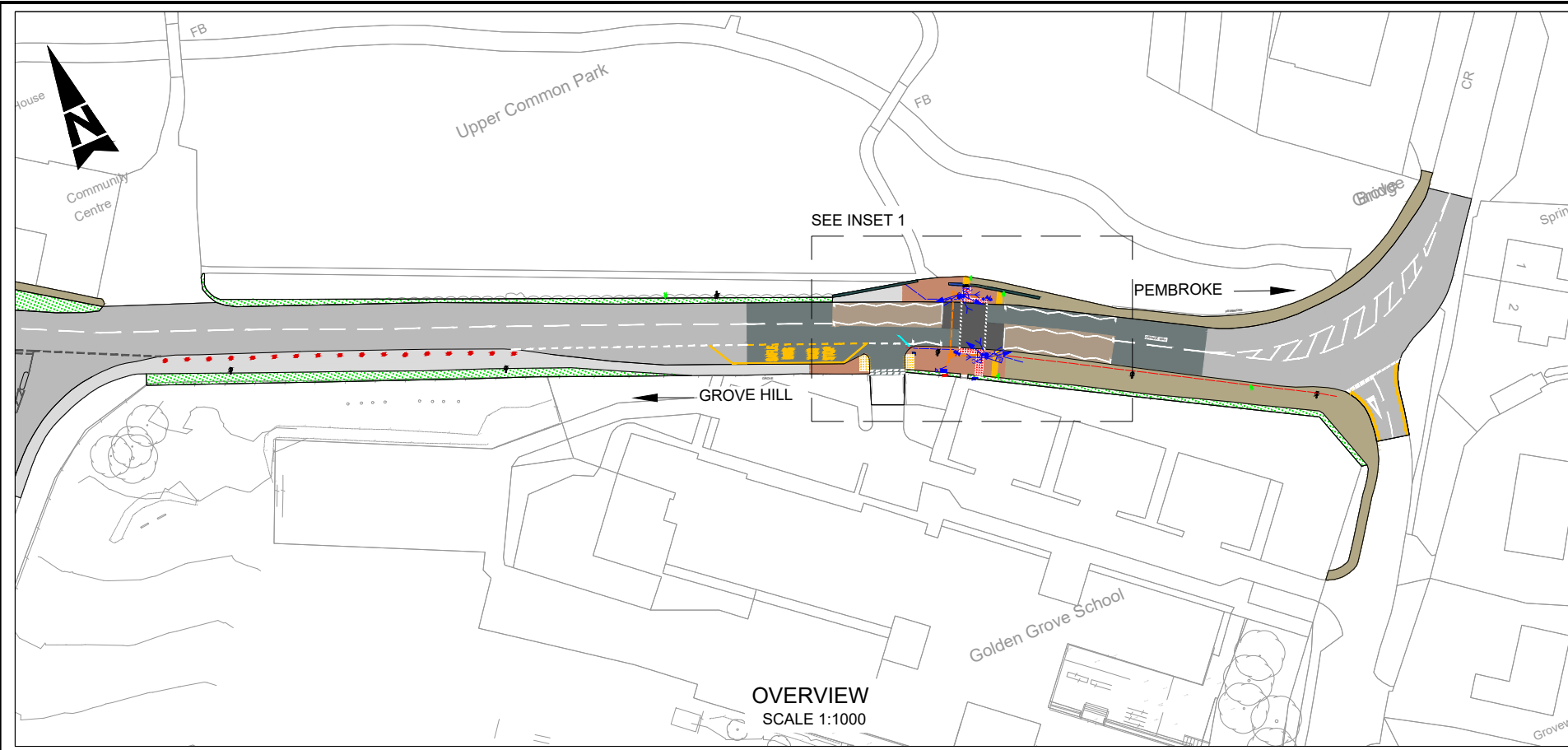
**Darren Thomas**

**Head of Infrastructure**

**Pembrokeshire County Council**

**County Hall, Haverfordwest**

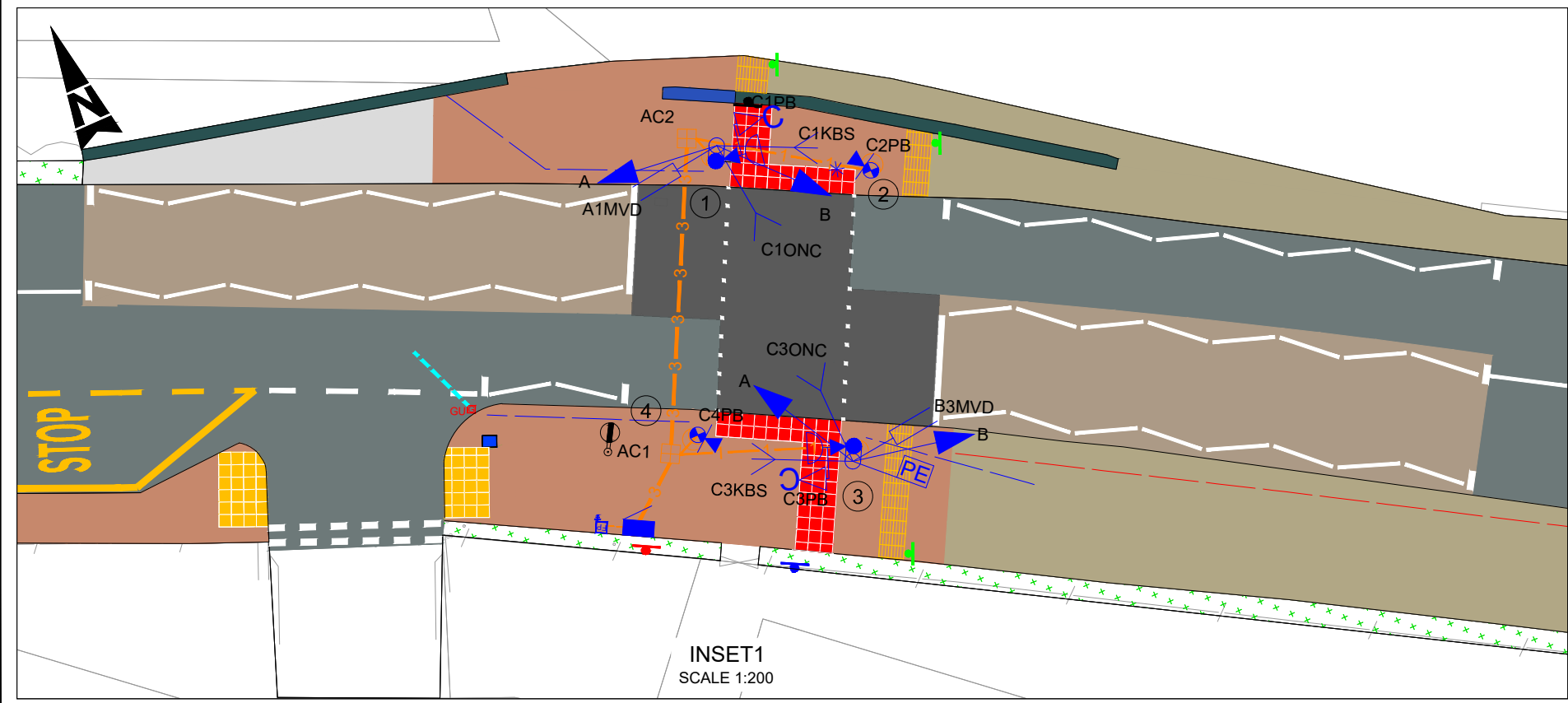
DO NOT SCALE



OVERVIEW  
SCALE 1:1000

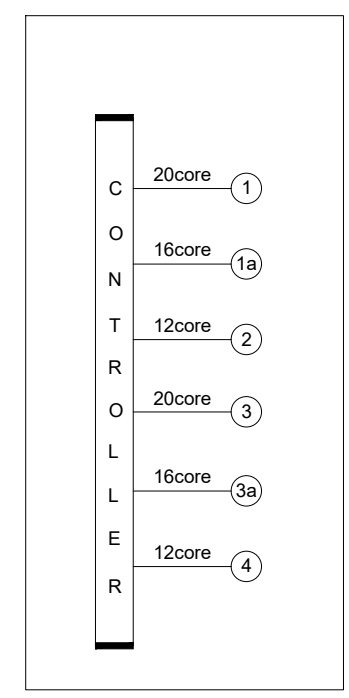
- NOTES:**
- DIMENSIONS ARE IN METRES UNLESS OTHERWISE STATED.
  - THIS DRAWING SHALL BE READ IN CONJUNCTION WITH APPENDIX 12/5 TRAFFIC SIGNAL EQUIPMENT REQUIREMENTS AND APPENDIX 5/2 DUCTING REQUIREMENTS.
  - ALL TRAFFIC SIGNAL EQUIPMENT TO HAVE A MINIMUM CLEARANCE OF 450mm FROM EDGE OF CARRIAGEWAY.
  - TRAFFIC SIGNAL POLES SHALL BE POSITIONED 0.8m FROM CARRIAGEWAY EDGE AND 0.5m FROM TACTILE PAVING.
  - A MINIMUM CLEARANCE OF 2.4m SHALL BE PROVIDED BETWEEN THE BOTTOM OF THE SIGNAL HEAD AND FINISHED FLOOR LEVEL.
  - TRAFFIC SIGNAL POLES, CONTROLLER AND CONTROLLER BASE SHALL BE FINISHED IN GREY.
  - PUSHBUTTON UNITS SHALL BE MOUNTED SO THE BUTTON IS POSITIONED AT 1.1m FROM FINISHED FLOOR LEVEL.
  - ALL PUSH BUTTON UNITS SHALL BE BI-LINGUAL AND BE EQUIPPED WITH TACTILE ROTATING CONES.
  - AUDIBLE DEVICES SHALL BE INSTALLED INTO THE PUSH BUTTON UNITS ON POLES 1 AND 3.

- KEY:**
- SIGNALS EQUIPMENT**
- 4.3m 114mm DIA. STEEL 'SWAN NECK' TRAFFIC SIGNAL POLE (GREY) WITH LOW-LEVEL ACCESS
  - 2m 114mm DIA. STEEL TRAFFIC SIGNAL POLE (GREY)
  - PRIMARY RAG TRAFFIC SIGNAL HEAD
  - ABOVE GROUND VEHICLE DETECTOR (MVD)
  - PEDESTRIAN ON-CROSSING DETECTOR
  - KERBSIDE DETECTOR
  - PHOTO-ELECTRIC CONTROL UNIT (PECU)
  - NEARSIDE COMBINED TOUCAN DISPLAY AND PUSH BUTTON UNIT (WITH TACTILE ROTATING CONE)
  - PUSH BUTTON UNIT (WITH TACTILE ROTATING CONE)
  - TRAFFIC SIGNAL CONTROLLER (GREY)
  - ELECTRICAL/ISOLATION FEEDER PILLAR
- DUCTS, ACCESS CHAMBERS**
- 1 X 50mm TRAFFIC SIGNAL DUCT (ORANGE)
  - 1 X 100mm TRAFFIC SIGNAL DUCT (ORANGE)
  - 3 X 100mm TRAFFIC SIGNAL DUCT (ORANGE)
  - 600mm X 600mm TRAFFIC SIGNAL ACCESS CHAMBER
  - 115mm DIAMETER RETENTION SOCKET



INSET1  
SCALE 1:200

**CABLE SCHEMATIC DIAGRAM**



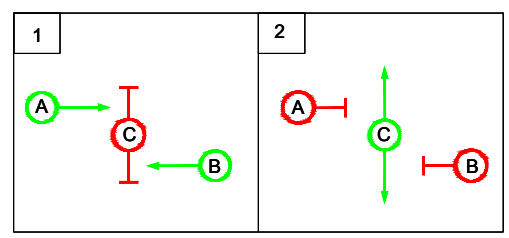
**SAFETY, HEALTH AND ENVIRONMENTAL INFORMATION**

In addition to the hazards/risks normally associated with the types of work detailed on this drawing, note the following significant residual risks (Reference shall also be made to the design hazard log).

Construction	None
Maintenance / Cleaning	None
Use	None
Decommissioning / Demolition	None

REPRODUCED FROM THE ORDNANCE SURVEY MAPPING WITH THE PERMISSION OF THE CONTROLLER OF HER MAJESTY'S STATIONERY OFFICE. © CROWN COPYRIGHT. UNAUTHORISED REPRODUCTION INFRINGES CROWN COPYRIGHT AND MAY LEAD TO PROSECUTION OR CIVIL PROCEEDINGS. PEMBROKESHIRE C.C. LOCAL AUTHORITY LICENCE NUMBER LA 100023344 2020

**PHASING AND STAGING DIAGRAM**



Description	Status	Revision	Drawn	Checked	Reviewed	Authorised	Issue Date
APPROVED - CONSTRUCTION	A3						
DESCRIPTION							
FINAL ISSUE	S2	P01	CW	SNP	MT	---	20/01/21
SECOND ISSUE	S4	P02	CW	SNP	MT	---	02/02/21
SECOND ISSUE	A3	C01	CW	SNP	MT	CD	05/02/21

**ATKINS**  
Member of the SNC Lavalin Group

West Glamorgan House  
12 Orchard Street  
Swansea  
West Glamorgan  
SA1 5AD

Tel: +44 (0)1792 641172  
Fax: +44 (0)1792 472019  
www.atkinsglobal.com

Copyright © SNC Lavalin (2020)

**PEMBROKESHIRE COUNTY COUNCIL**

Project Title	GOLDEN GROVE CROSSING		
Drawing Title	TRAFFIC SIGNALS DETAILED DESIGN		
Drawing Number	PE05_801	Originator	ATK
Project	SWMWREC	Volume	HTS - DR - CH - 000001
Location		Type	
Original Size	A1	Scale	AS SHOWN
Project Ref. No.	5191491	Sheet	1 of 1
Rev	C01		