

## Appendix 3

### Prioritisation Maps

- 8.81 The following maps depict the criteria used for the prioritisation of identified green infrastructure opportunities (see **Appendix 2** and **Appendix 4**) and which were used to identify 'key zones for generic green infrastructure opportunities' (see the town overview maps within the **Action Plan**).
- 8.82 These maps show the distance of opportunities from existing green infrastructure assets and important features for each green infrastructure themes (see **Table 8.1**). Key projects and key zones for generic green infrastructure opportunities were identified in locations of deficiency in existing green infrastructure connectivity (**Figure 8.35**) and an in priority locations based on each green infrastructure theme (**Figure 8.36 - Figure 8.55**).

**Table 8.1: Prioritisation criteria for each theme and summary of mapping approach.**

Theme	Criteria	Summary
Active transport and connectivity	How far is the nearest access route?	<b>Active and public transport heat map:</b> Opportunities were prioritised in locations where active transport routes and public transport nodes are further away.
Biodiversity	What is the biodiversity value of the site?	<b>WWBIC Pembrokeshire Biodiversity value:</b> Opportunities were prioritised in locations where biodiversity value is lower.
Cultural heritage	How far is the nearest heritage asset?	<b>Designated heritage assets heat map:</b> Opportunities were prioritised in locations where designated heritage assets are closer.
Health and well-being	Within an area of health deprivation?	<b>Index of multiple deprivations – health deprivation:</b> Opportunities were prioritised in locations where there are higher levels of health deprivation.
	Within an area of physical environment deprivation?	<b>Index of multiple deprivations – physical environment deprivation:</b> Opportunities were prioritised in locations where there are higher levels of physical environment deprivation.
	Within an AQMA?	<b>Air Quality Management Areas:</b> Opportunities were prioritised in locations that are within Air Quality Management Areas (AQMAs).

Theme	Criteria	Summary
	How far are the nearest active travel routes or open space?	<b>Active transport and open space:</b> Opportunities were prioritised in locations where active transport routes, public transport nodes and open spaces are further away.
Landscape	All opportunities have the same baseline for this theme	<b>Landscape Character Areas:</b> There are various landscapes characters present across Pembrokeshire that should be reflected when developing opportunities. However, opportunities were prioritised based only on their potential to deliver landscape enhancements (see <b>Appendix 1</b> ).
Recreation and play	How far is the nearest recreational facility?	<b>Recreation heat map:</b> Opportunities were prioritised in locations where recreational facilities are further away.
Social and Economic Regeneration	Within an area of regeneration?	<b>Regeneration masterplans:</b> Opportunities were prioritised in locations that are identified within adopted and emerging regeneration masterplans.
	Within an area of deprivation?	<b>Index of multiple deprivations – overall deprivation:</b> Opportunities were prioritised in locations where there are higher levels of overall deprivation.
	How many people could this opportunity benefit?	<b>Population density:</b> Opportunities were prioritised in locations where there are higher population densities.
Flooding	Within a flood zone?	<b>Flood zones:</b> Opportunities were prioritised in locations that are within flood zones.
	Within an area identified for natural flood prevention measures?	<b>Natural capital flood prevention analysis opportunities:</b> Opportunities were prioritised in locations that are identified as having natural capital flood prevention opportunities.



Pembrokeshire Towns:  
A Green Infrastructure  
Action Plan

Figure 8.35: Green  
Infrastructure Network

- Green infrastructure
- Green infrastructure Lacking (750 m+)
- Near (0 m)

Source: FC, LUC, NRW, OS, PCC, PCNPA, Sustrans, WWBIC

Varied scales





Pembrokeshire Towns:  
A Green Infrastructure  
Action Plan

Figure 8.36: Active Transport and Connectivity  
*Active and Public Transport*

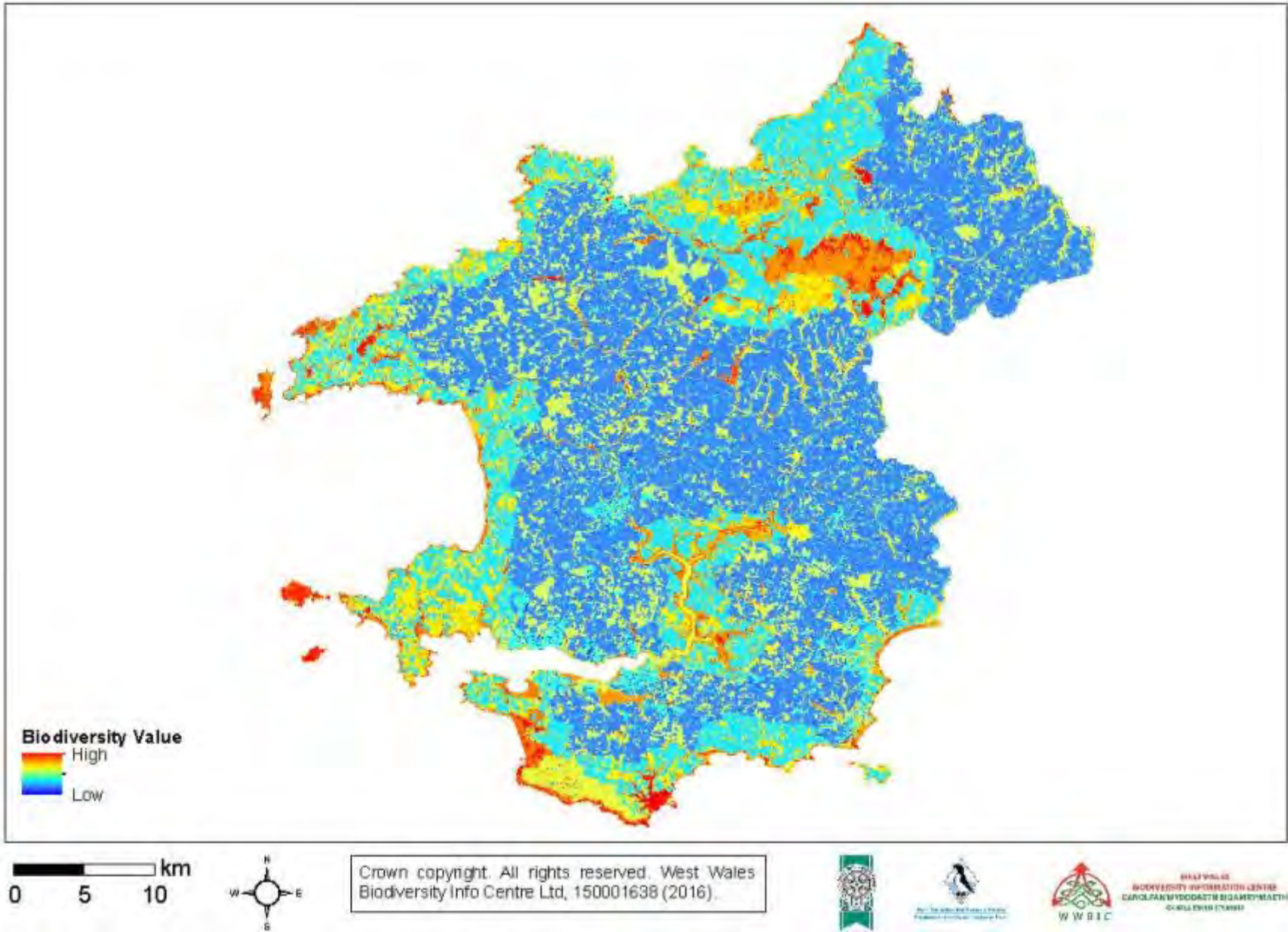
- Green infrastructure
- Active and public transport
- Lacking (750 m+)
- Near (0 m)

Source: LUC, NRW, OS, PCC, PCNPA, Sustrans, WWBIC

Varied scales



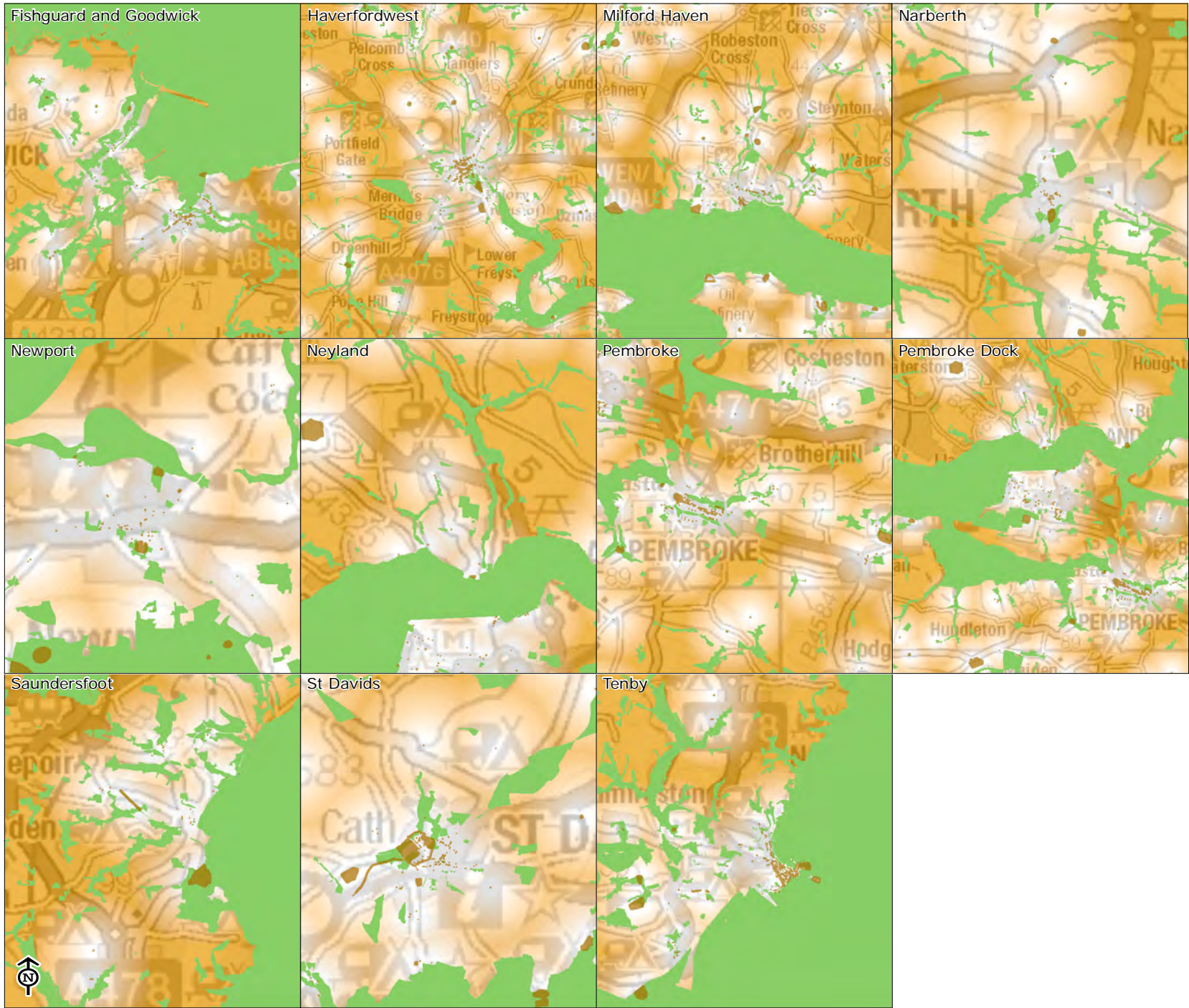
Figure 8.37: Biodiversity - Biodiversity Value (Source: WWBIC)



Pembrokeshire Towns:  
A Green Infrastructure  
Action Plan

Figure 8.38: Cultural  
Heritage  
*Cultural Heritage Assets*

- Green infrastructure
  - Heritage
- Cultural heritage assets
- Lacking (750 m+)
  - Near (0 m)

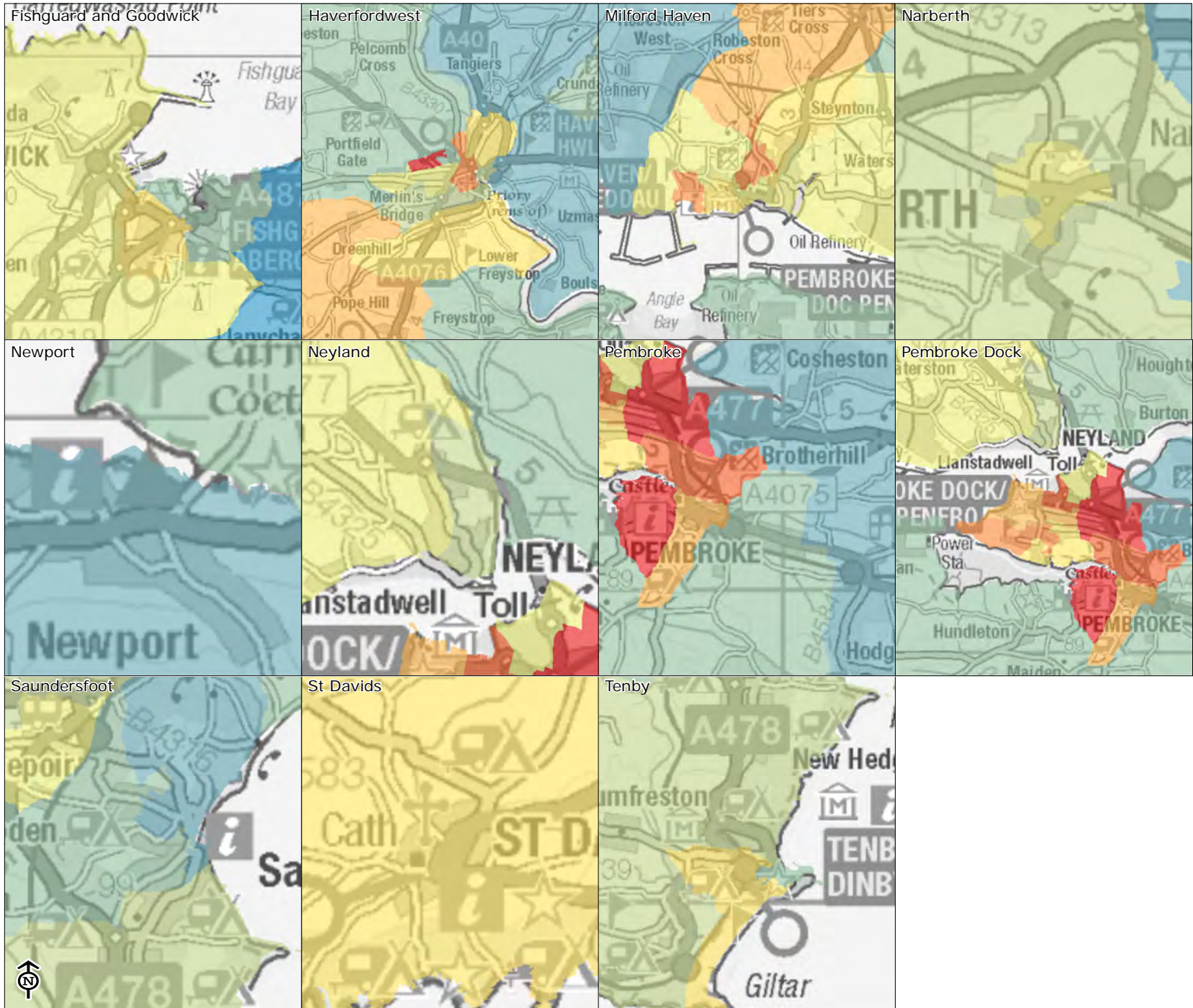
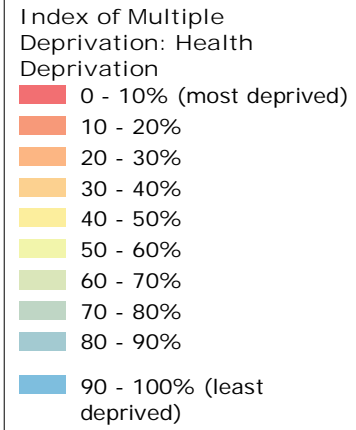


Source: LUC, NRW, OS  
Varied scales



Pembrokeshire Towns:  
A Green Infrastructure  
Action Plan

Figure 8.39: Health and Well-being  
*Health Deprivation*

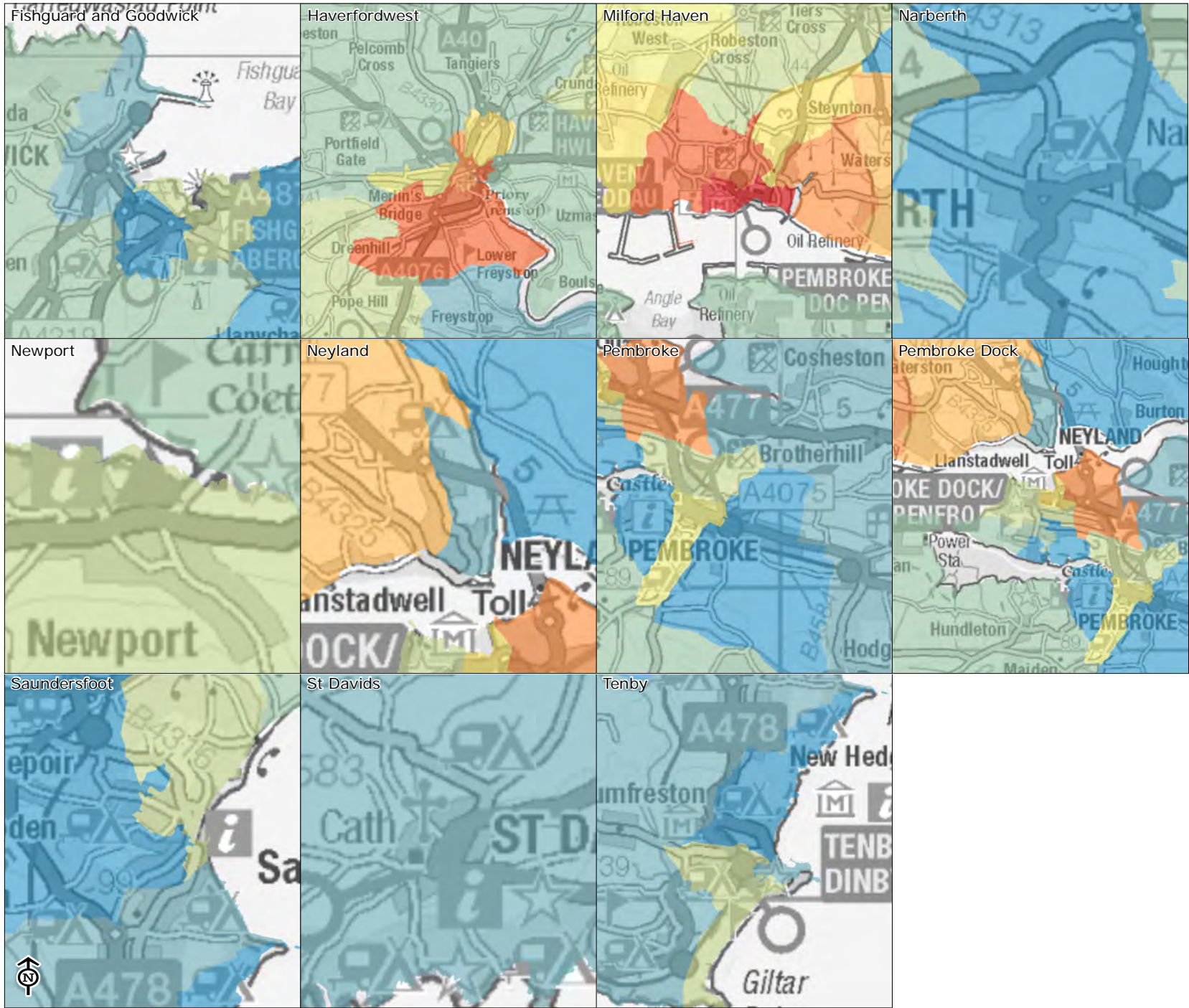
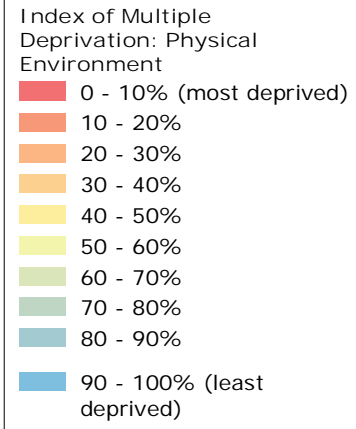


Source: LUC, OS, Welsh Government  
Varied scales



Pembrokeshire Towns:  
A Green Infrastructure  
Action Plan

Figure 8.40: Health and Well-being  
*Physical Environment*




Source: LUC, OS, Welsh Government  
Varied scales





Pembrokeshire Towns:  
A Green Infrastructure  
Action Plan

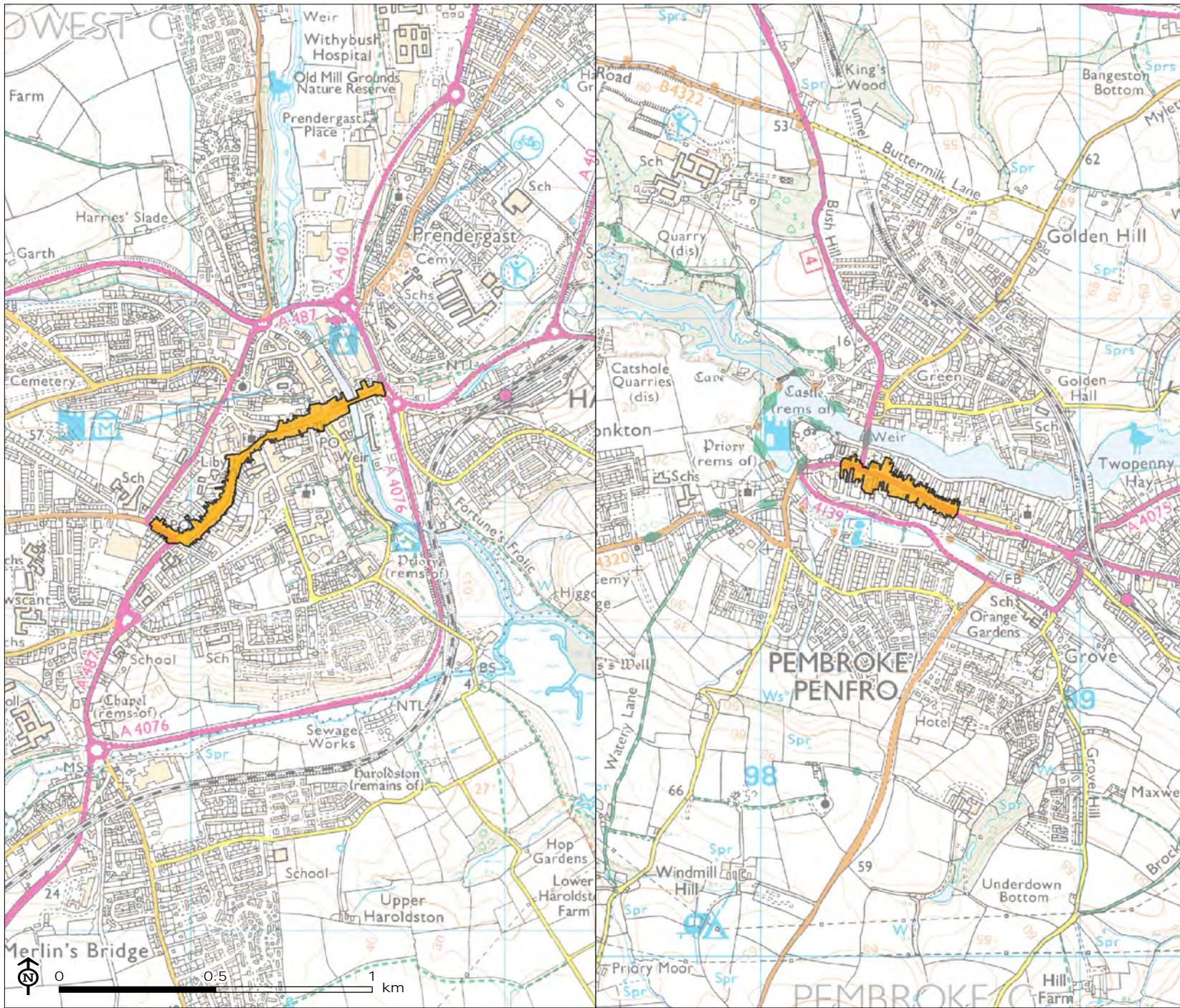
Figure 8.41: Health and Well-being  
*Air Quality Management Areas (AQMA)*

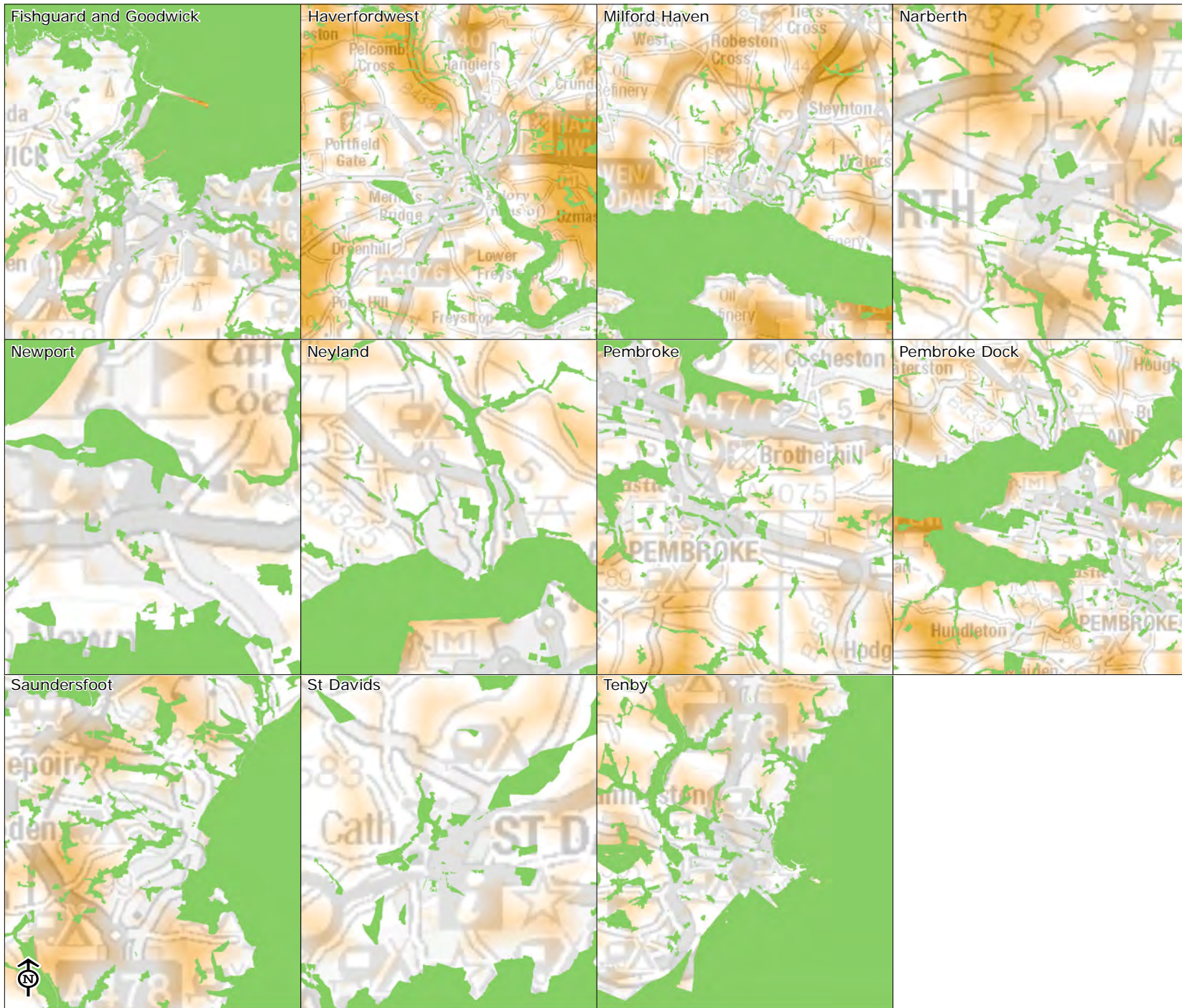
 Air quality management area\*

\*There are only AQMAs in Haverfordwest and Pembroke

Source: OS, PCC

Map Scale @ A4: 1:17,000





Pembrokeshire Towns:  
A Green Infrastructure  
Action Plan

Figure 8.42: Health and Well-being  
*Active Transport and Open Spaces*

■ Green infrastructure  
■ Active transport and open space  
 Active transport and open space  
■ Lacking (750 m+)  
■ Near (0 m)

Source: LUC, NRW, OS, PCC, PCNPA, Sustrans, WWBIC

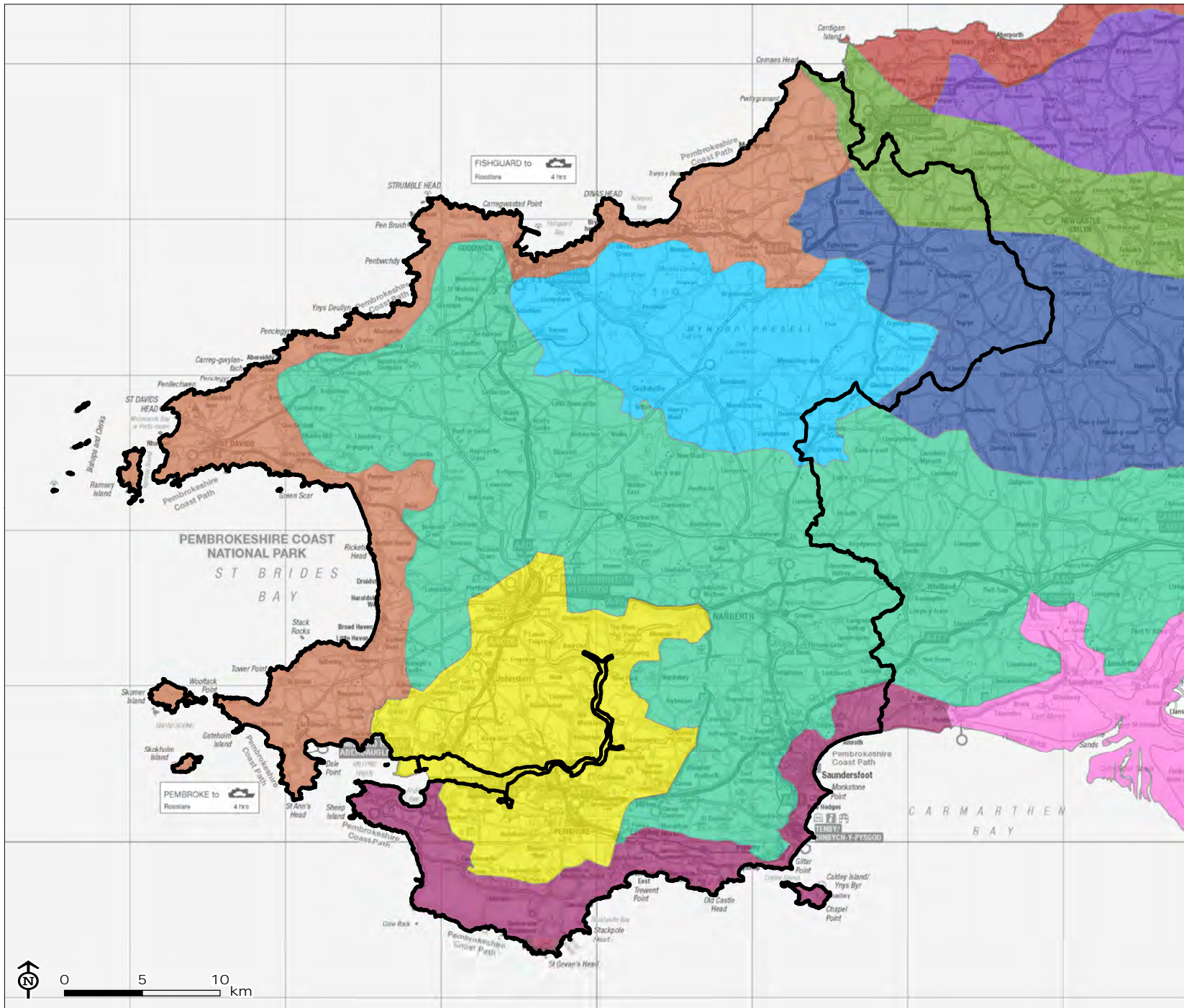
Varied scales



Pembrokeshire Towns:  
A Green Infrastructure  
Action Plan

Figure 8.43: Landscape  
*National Landscape Character  
Areas*

- 24: Ceredigion Coast
- 25: Bro Ceredigion
- 40: Teifi Valley
- 42: Pembroke and Carmarthen Foothills
- 43: West and North Pembrokeshire Coast
- 44: Taf and Cleddau Vales
- 45: Taf, Tywi and Gwendraeth Estuaries
- 46: Preseli Hills
- 47: South Pembrokeshire Coast
- 48: Milford Haven

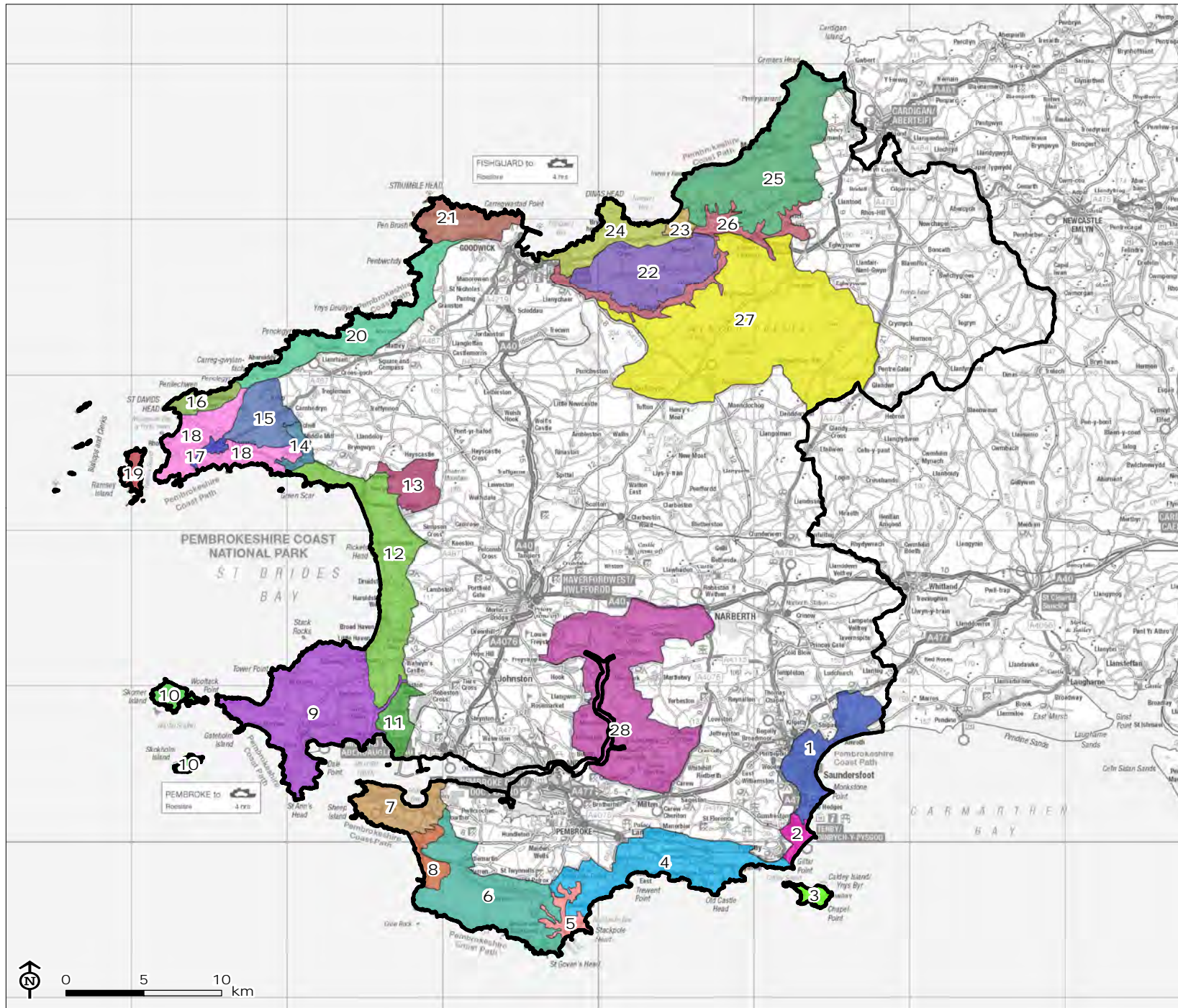


Source: NRW  
Map Scale @ A4: 1:350,000



Pembrokeshire Towns:  
A Green Infrastructure  
Action Plan

Figure 8.44: Landscape  
*Pembrokeshire Coast National  
Park Authority Landscape*



- 1: Saundersfoot settled coast
- 2: Tenby
- 3: Caldey Island
- 4: Manorbier/Freshwater East
- 5: Stackpole
- 6: Castlemartin/Merrion Ranges
- 7: Angle Peninsula
- 8: Freshwater West/Brownslade Burrows
- 9: Marloes
- 10: Skomer & Skokholm
- 11: Herbrandston Refinery Fringe
- 12: St Brides Bay
- 13: Brandy Brook
- 14: Solva Valley
- 15: Dowrog & Tretio Commons
- 16: Carn Llidi
- 17: St Davids
- 18: St Davids Headland
- 19: Ramsey Island
- 20: Trefin
- 21: Pen Caer/Strumble Head
- 22: Mynydd Carningli
- 23: Newport
- 24: Dinas Head
- 25: Cemaes Head
- 26: Cwm Gwaun/Afon Nyfer
- 27: Mynydd Preseli
- 28: Daugleddau

Source: NRW

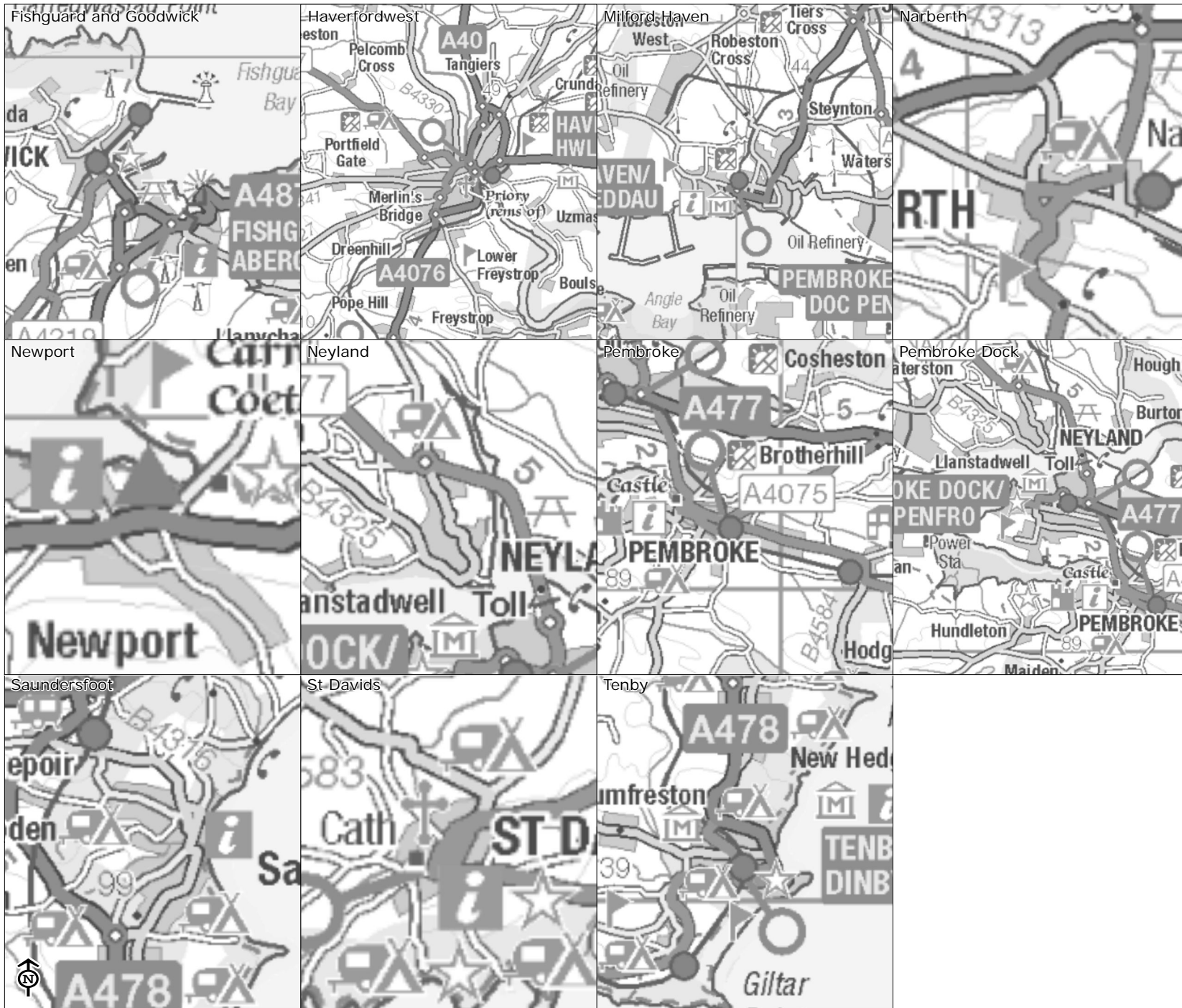
Map Scale @ A4: 1:350,000



Pembrokeshire Towns:  
A Green Infrastructure  
Action Plan

Figure 8.45: Recreation and Play  
*Recreation and Play Facilities*

- Green infrastructure
  - Recreation and play facilities
- Recreation
- Lacking (750 m+)
  - Near (0 m)



Source: LUC, NRW, OS, PCC, PCNPA, Sustrans

Varied scales



Figure 8.46: Social and Economic Regeneration - Fishguard and Goodwick emerging masterplan (Source: Pembrokeshire County Council)

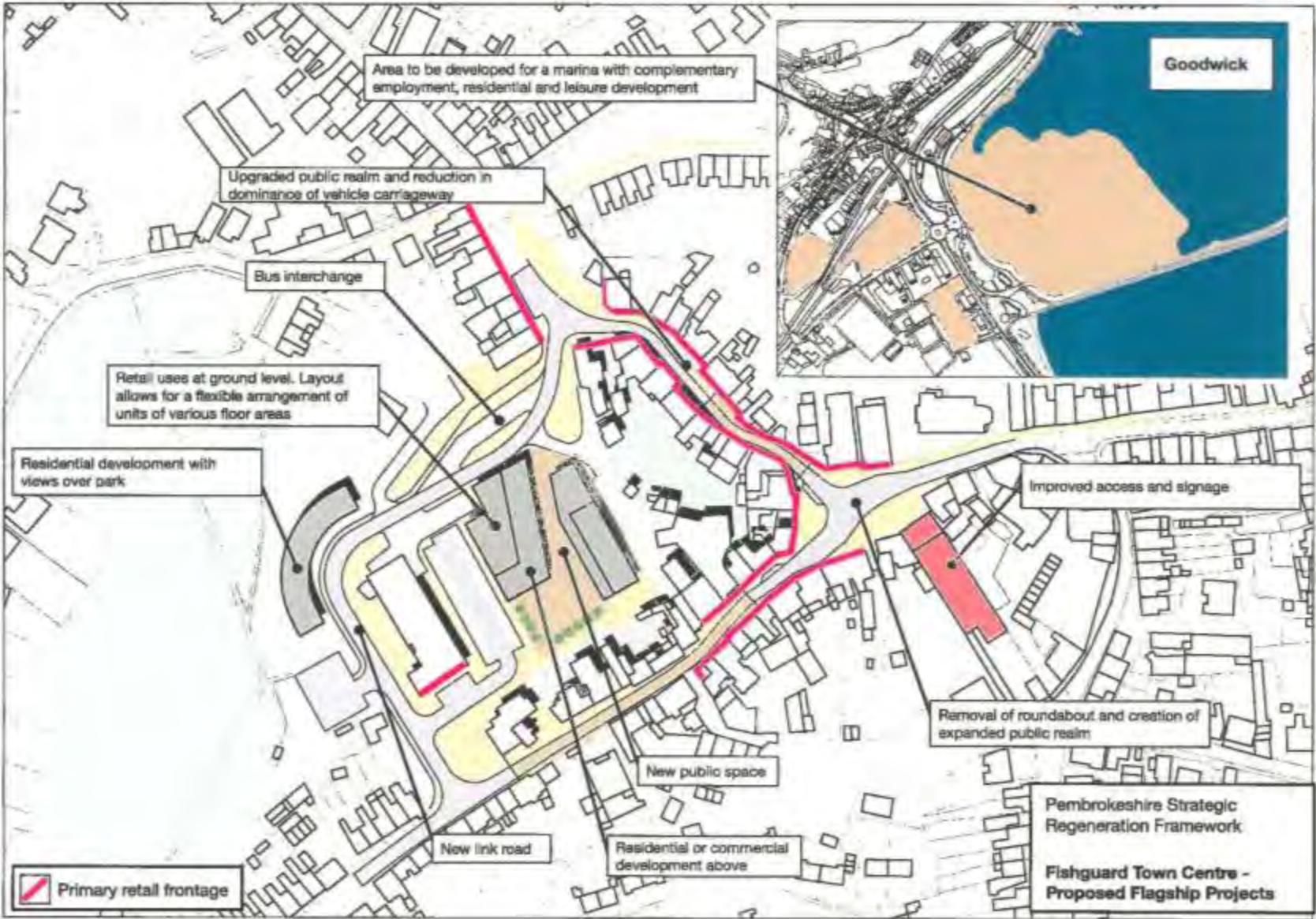


Figure 8.47: Social and Economic Regeneration - Haverfordwest adopted masterplan (Source: Adopted Haverfordwest – A Vision for the Future, Pembrokeshire County Council)

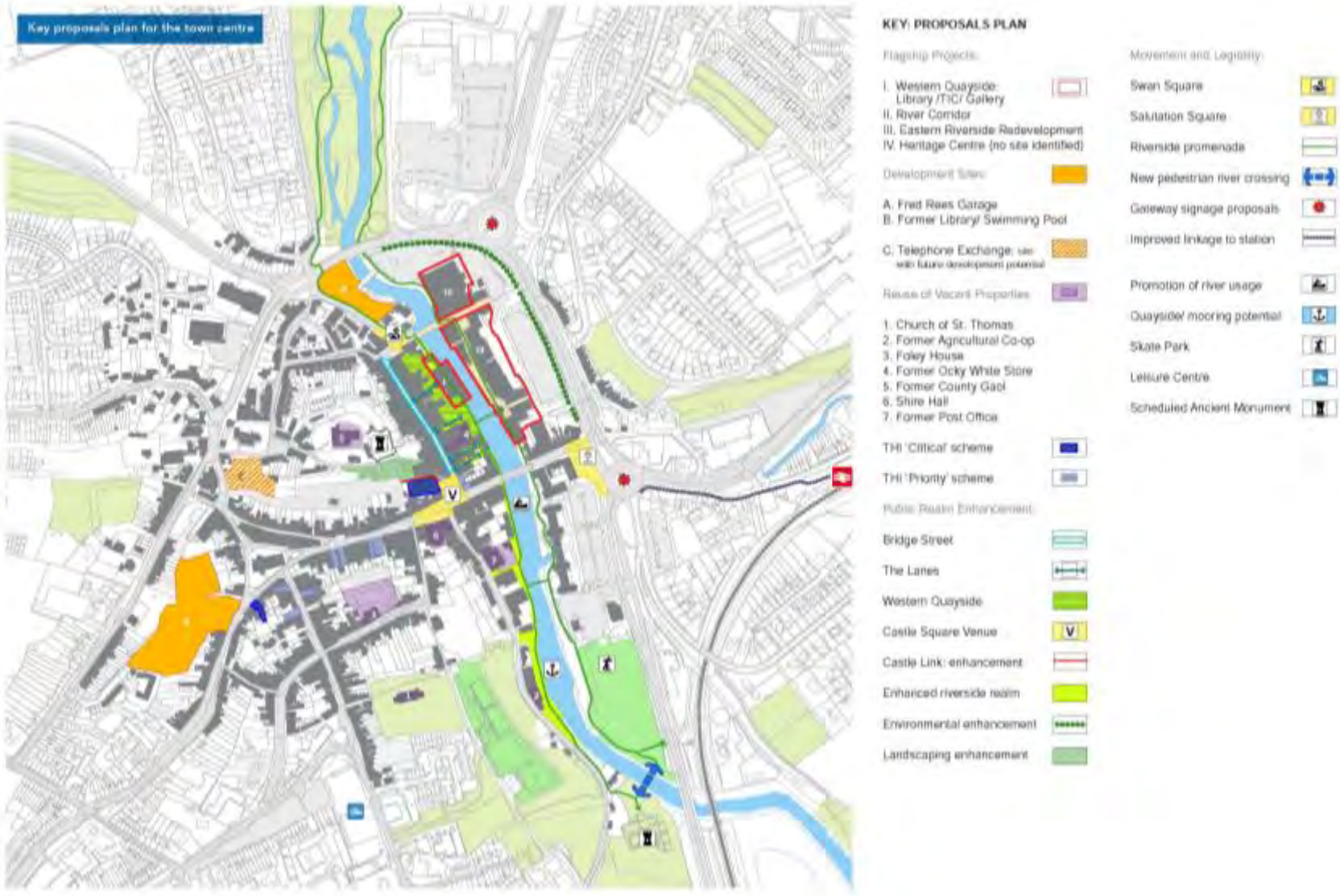


Figure 8.48: Social and Economic Regeneration - Milford Haven emerging masterplan (Source: Pembrokeshire County Council)

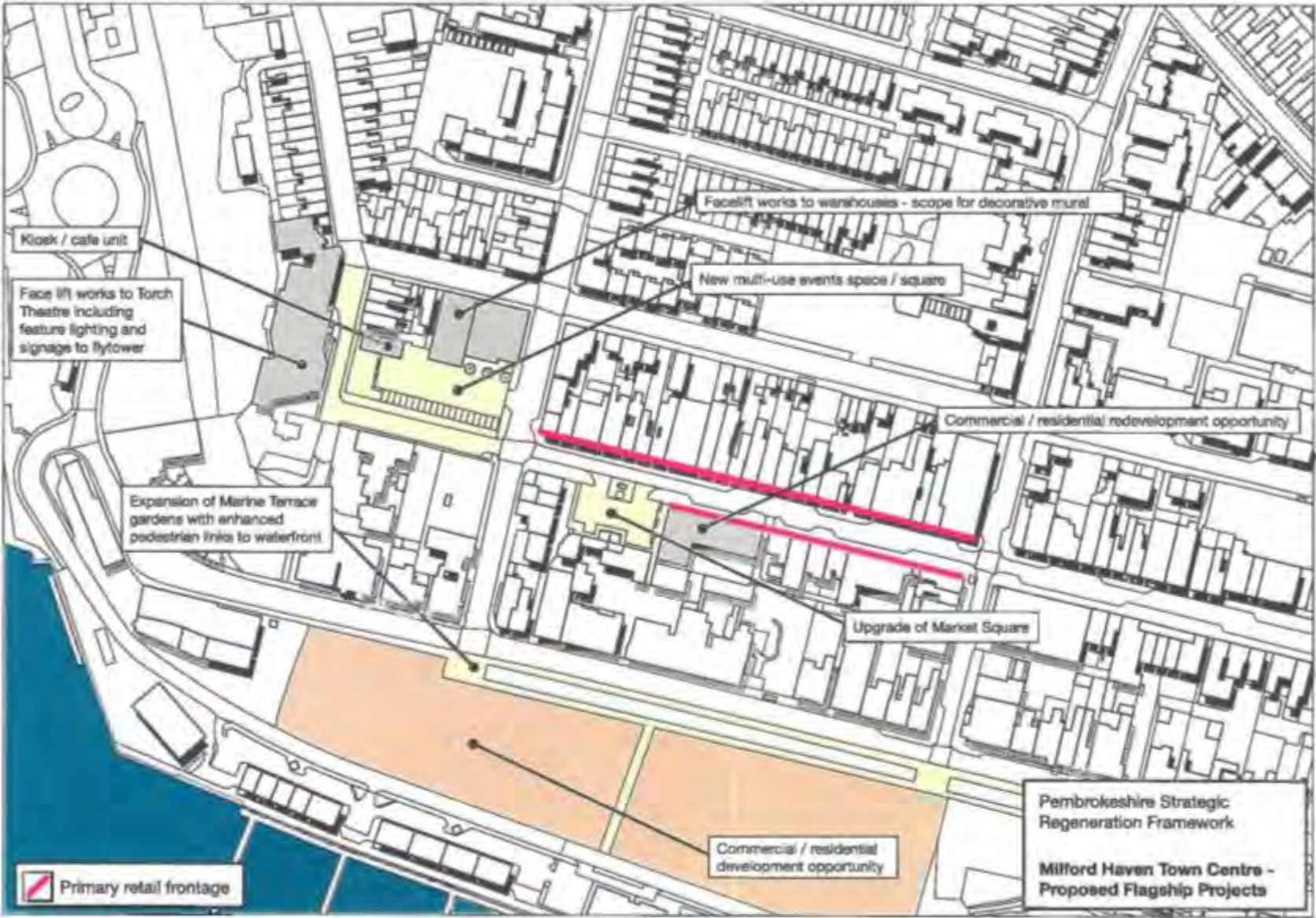




Figure 8.49: Social and Economic Regeneration - Pembroke emerging masterplan (Source: Pembrokeshire County Council)

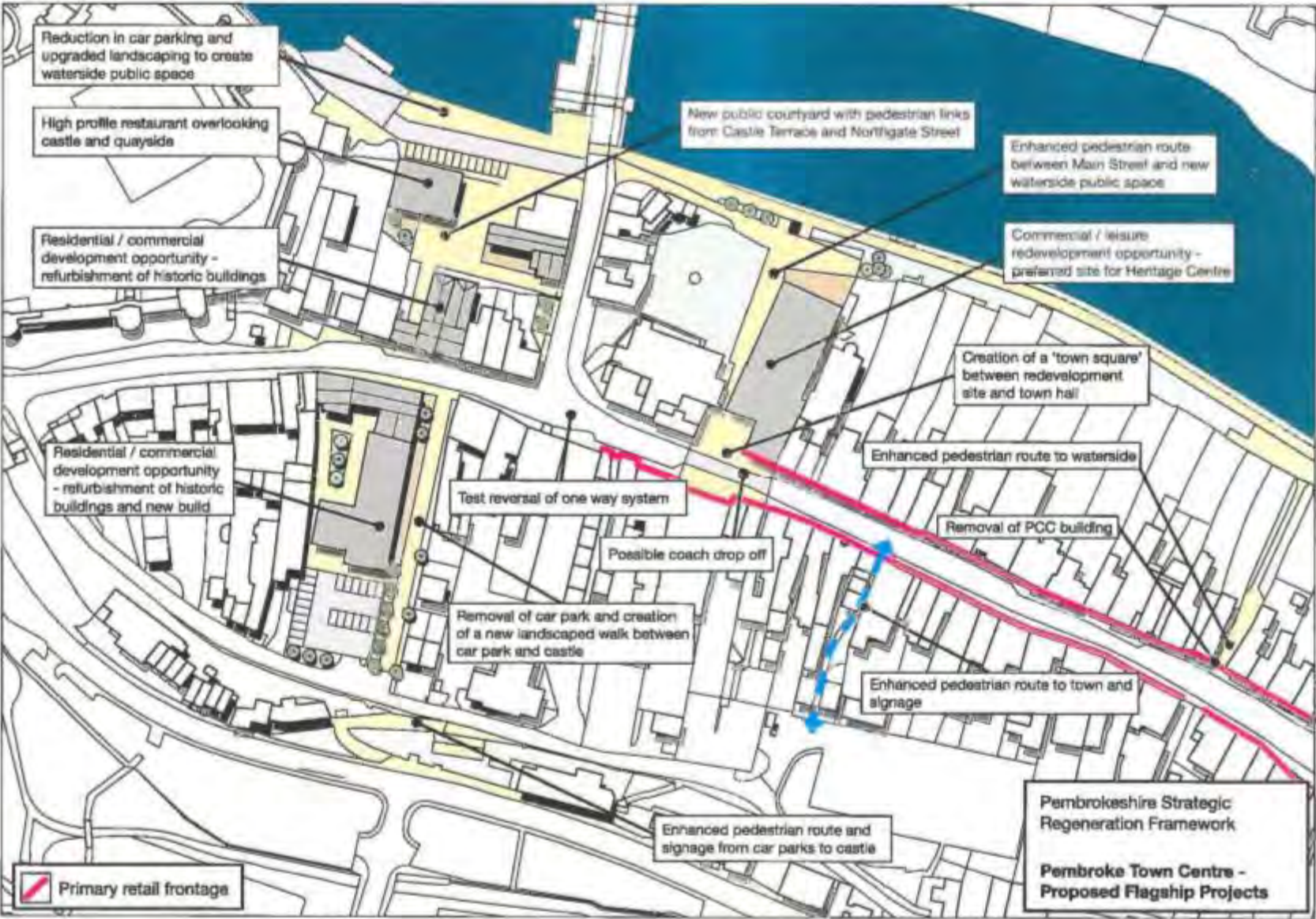


Figure 8.50: Social and Economic Regeneration - Pembroke Dock emerging masterplan (Source: Pembrokeshire County Council)

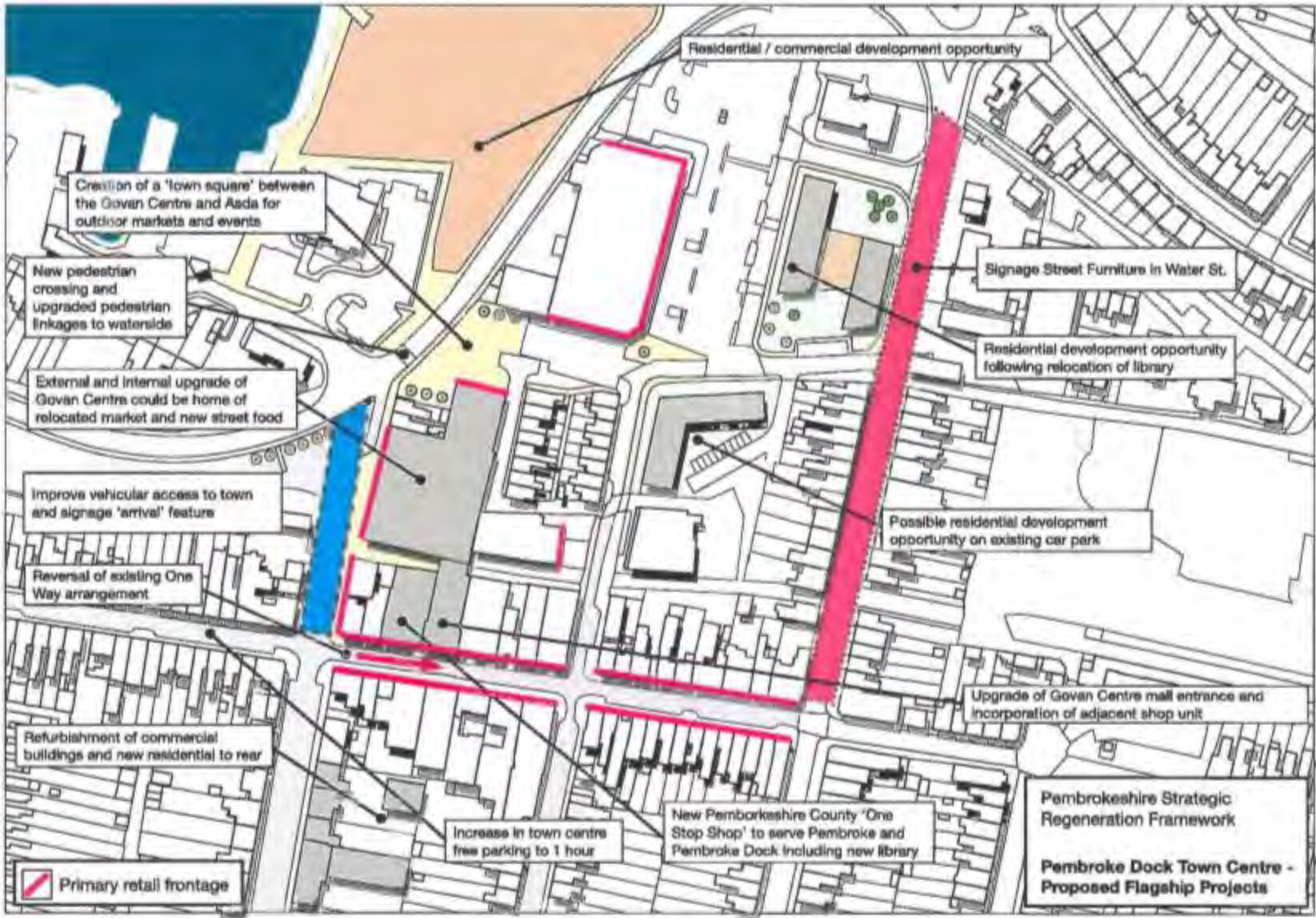
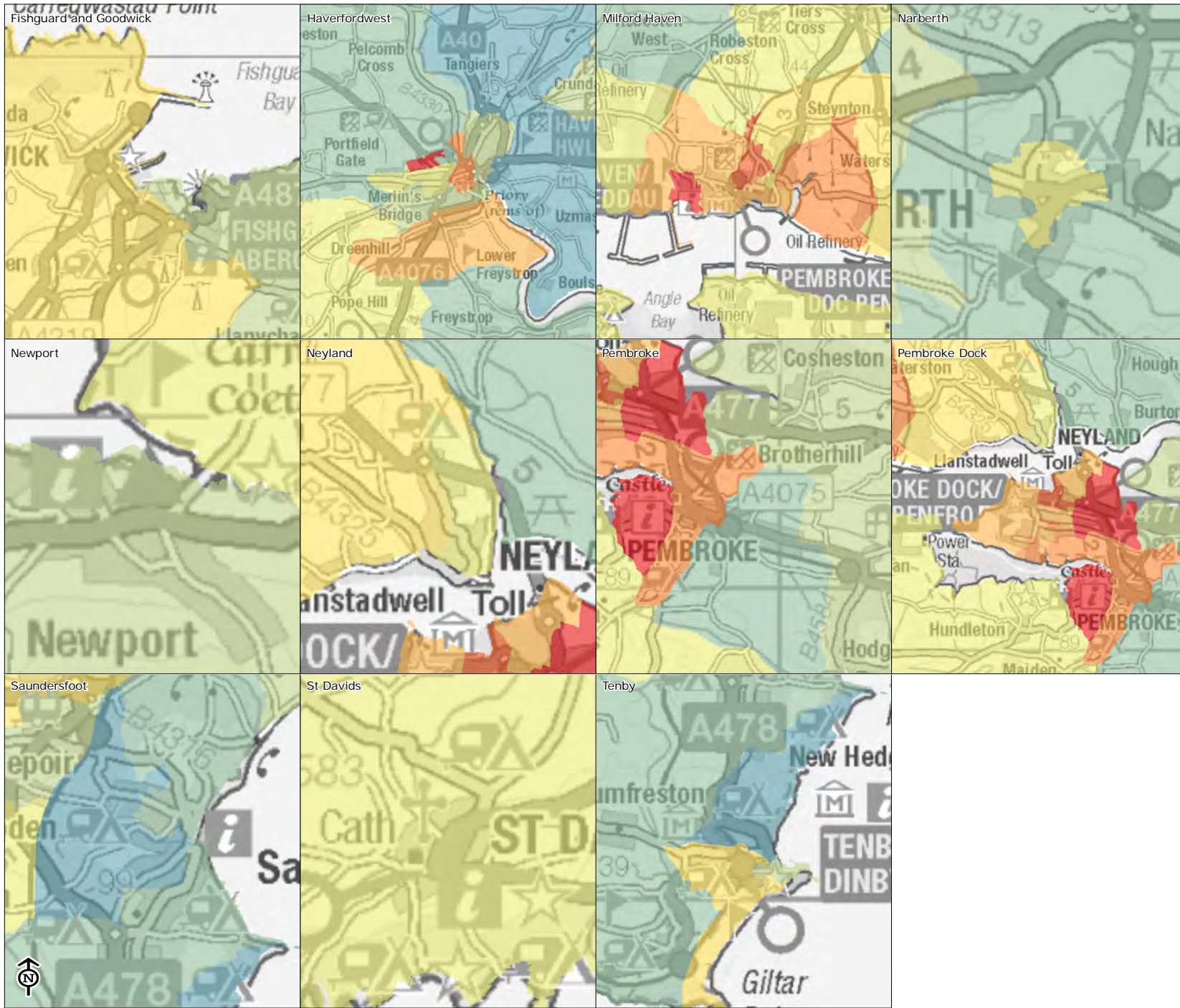
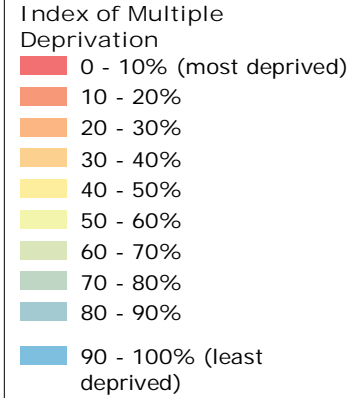


Figure 8.51: Social and Economic Regeneration - Tenby emerging masterplan (Source: Pembrokeshire County Council)



Pembrokeshire Towns:  
A Green Infrastructure  
Action Plan

Figure 8.52: Social and Economic Regeneration  
*Overall Deprivation*

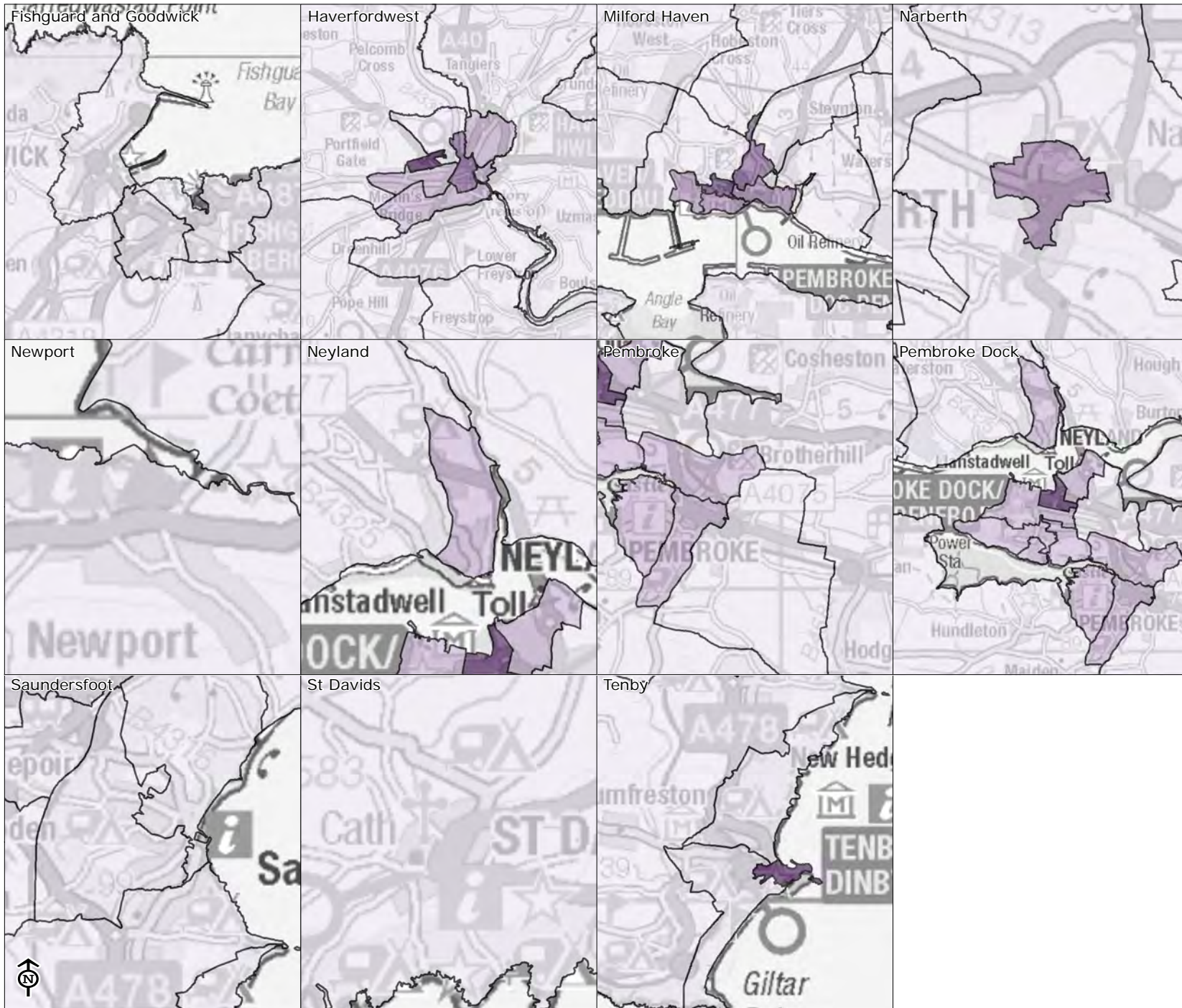
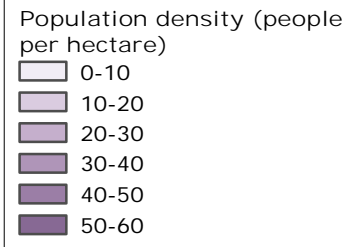


Source: LUC, OS, Welsh Government  
Varied scales



Pembrokeshire Towns:  
A Green Infrastructure  
Action Plan

Figure 8.53: Social and  
Economic Regeneration  
*Estimated population within  
800 m*



Source: LUC, OS, ONS

Varied scales



Pembrokeshire Towns:  
A Green Infrastructure  
Action Plan

Figure 8.54: Flooding  
*Flood Zones*

- Flood zone 3
- Flood zone 2



Source: LUC, OS, NRW

Varied scales



Pembrokeshire Towns:  
A Green Infrastructure  
Action Plan

Figure 8.55: Flooding  
*Natural Flood Prevention  
Opportunities*

- Natural capital flood prevention analysis
- Tree planting opportunity
  - Wetlands floodplain opportunity
  - Shelterbelt opportunity
  - Re-wetting opportunity
  - Field margin opportunity



Source: LUC, OS, PCC  
Varied scales

