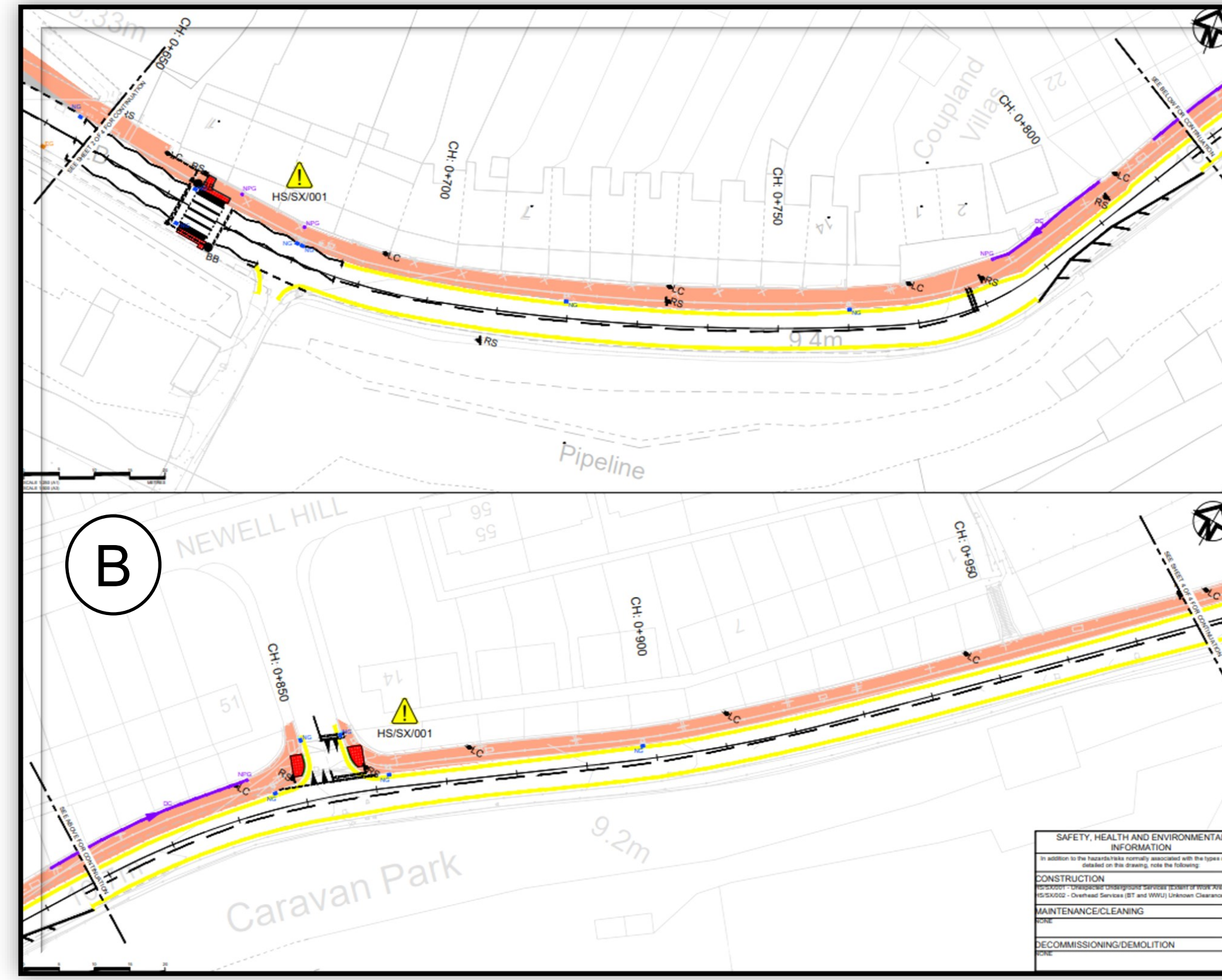
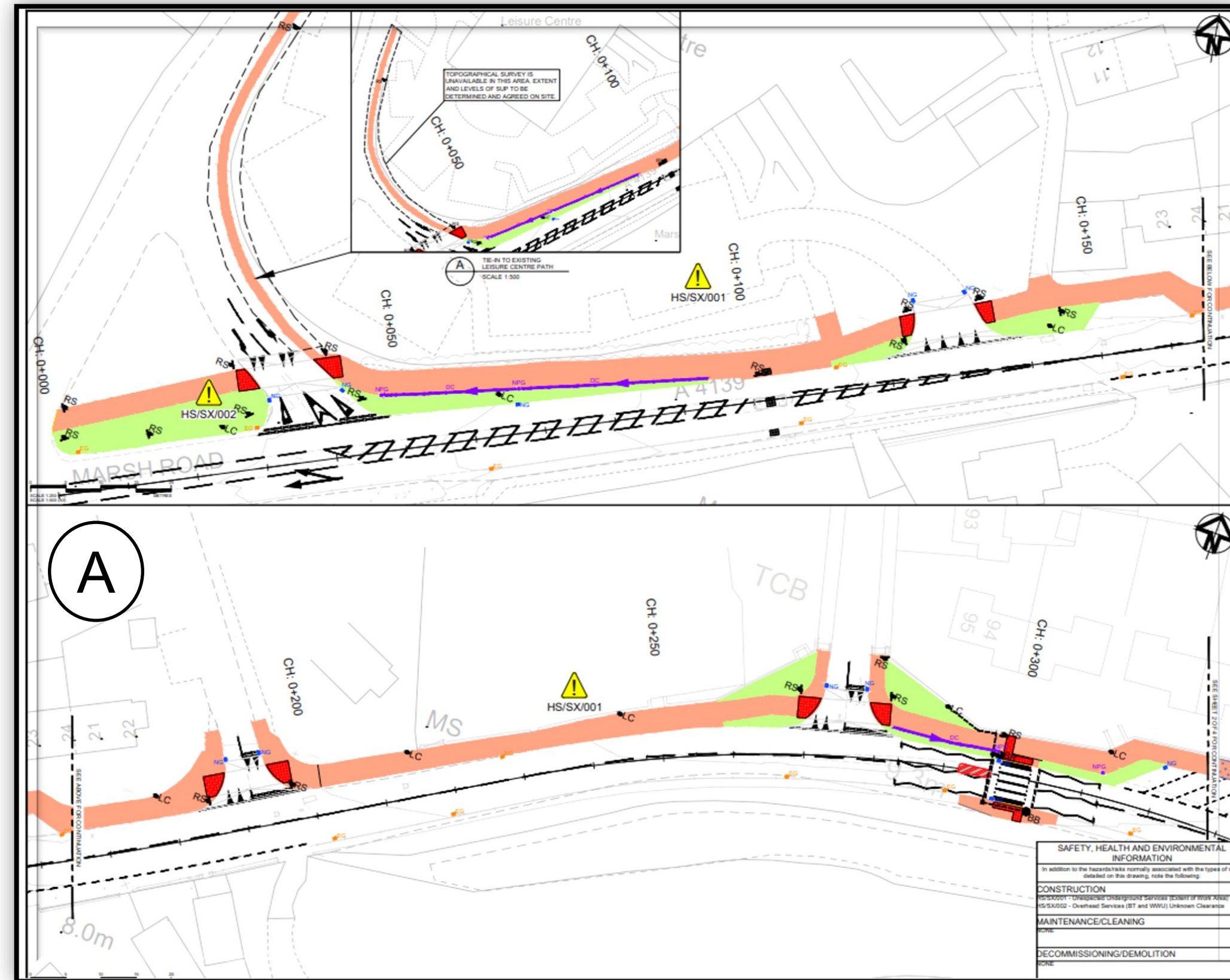


Marsh Road Multi-User Route

Location: Penally/Tenby



Marsh Road Multi-User Route

The Marsh Road MUR is proposed to improve connectivity between Marsh Road and Heywood Lane, providing pedestrian and cyclist infrastructure to the nearby rail station.

The improvements along the route take in Greenhill High School (Ysgol Greenhill), the leisure centre, Kiln Park and the Salterns Car Park.

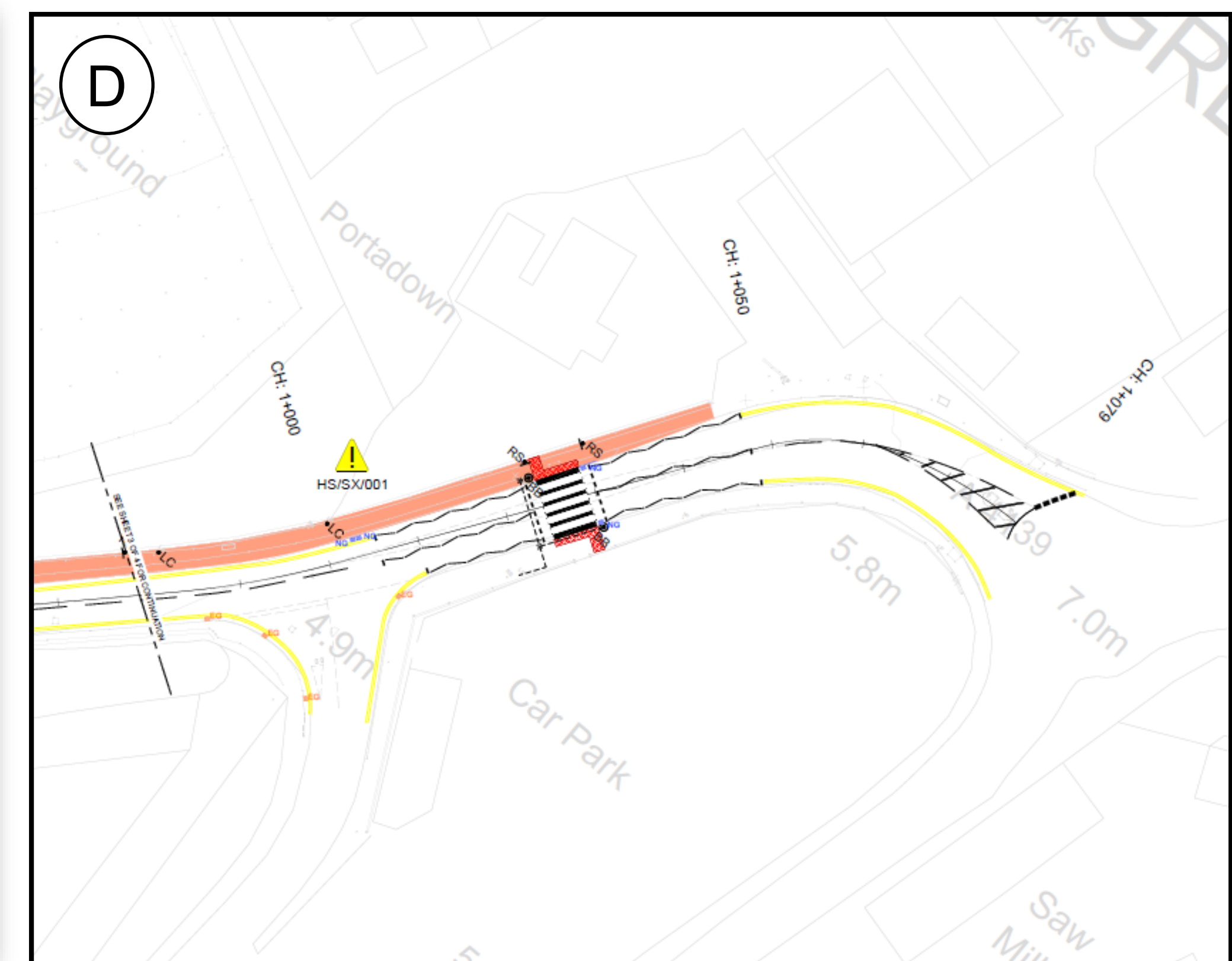
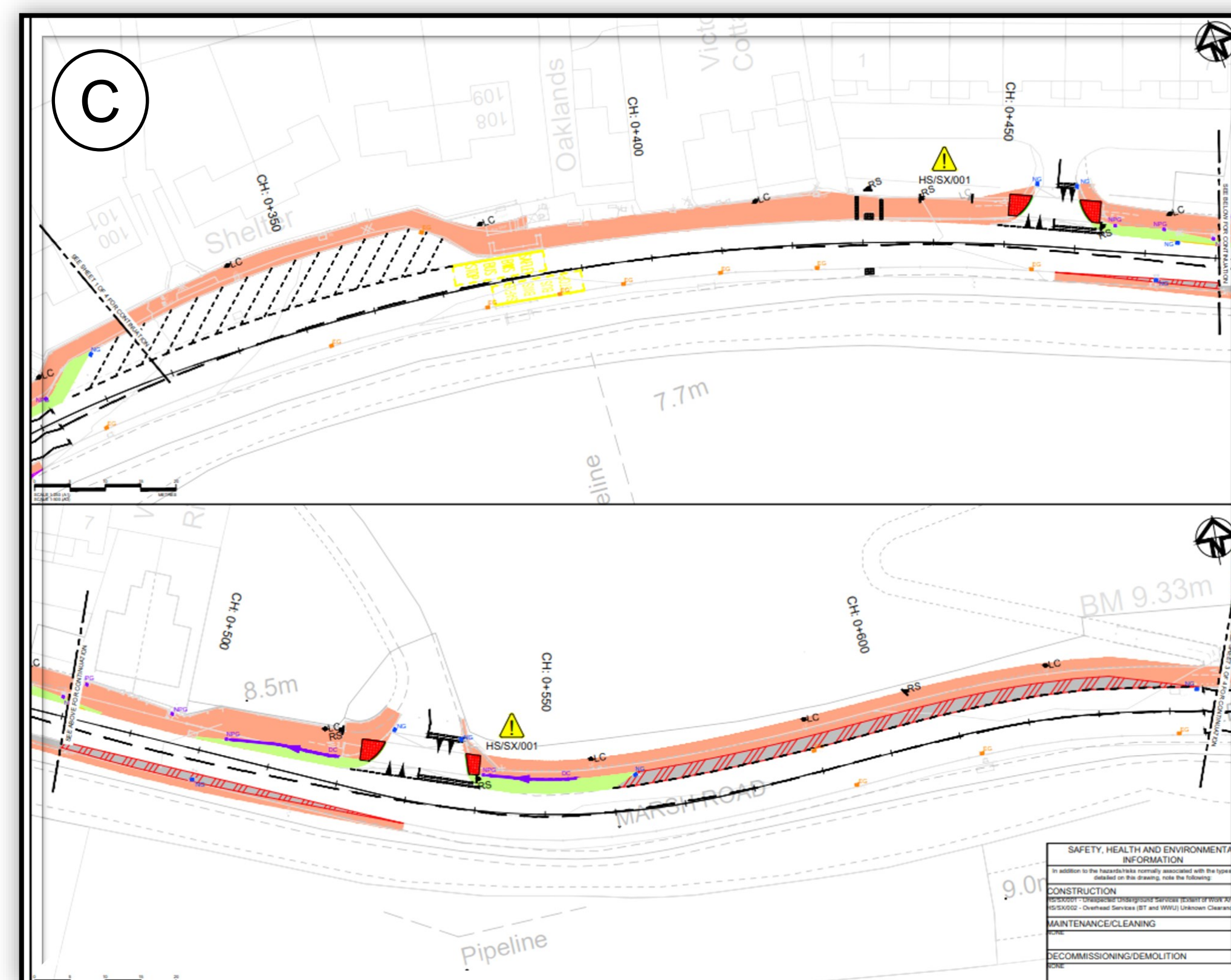
Discussion with the Local Member and Community council has been undertaken to obtain initial feedback. The proposal has been initially well received.

We are now seeking feedback on the initial feasibility layouts presented before finalising a preferred option.

The Marsh Road MUR Scheme includes the following proposed elements:

- formation of a new footway to Active Travel Standards,
- uncontrolled crossing points,
- carriageway realignment, and
- zebra crossing.

- Shared Use Path
- Grass verge



PCC Transport Strategy Team



Ariennir gan Lywodraeth Cymru
Funded by Welsh Government